

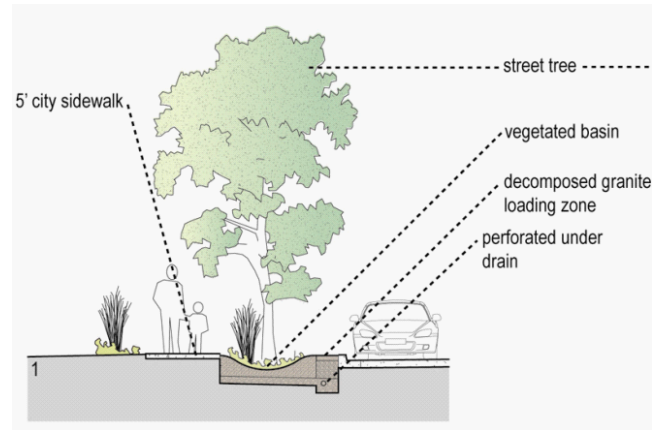
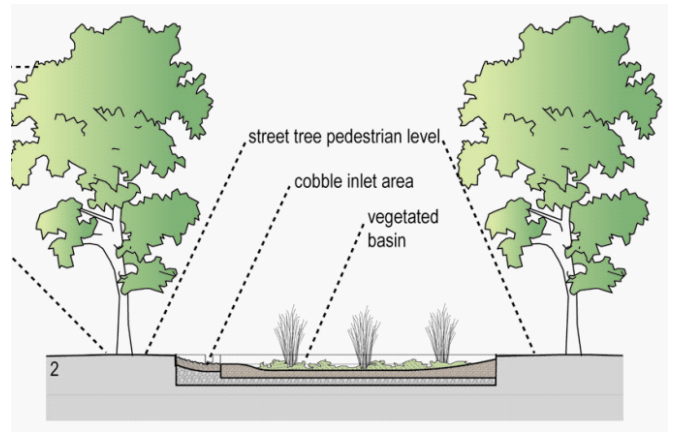
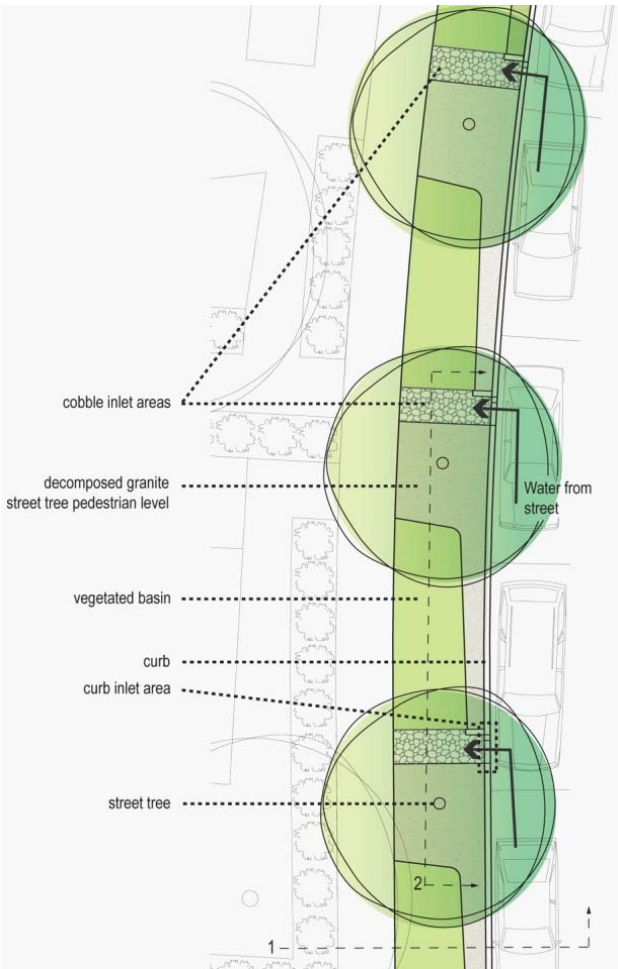


STREET TREE RAIN GARDENS AND PROPERTY LINE PLANTING STRIP FRAME THE PUBLIC SIDEWALK



GEOS

STREET TREE RAIN GARDENS



STREET TREE RAIN GARDEN WITH STORMWATER FILTRATION WHILE PASSIVELY IRRIGATING TREES

STREET TREE RAIN GARDENS FILTER RUNOFF FROM STREETS AND FROM PRIVATE PARCELS



GEOS

PERCOLATION PARKS: SQUARES



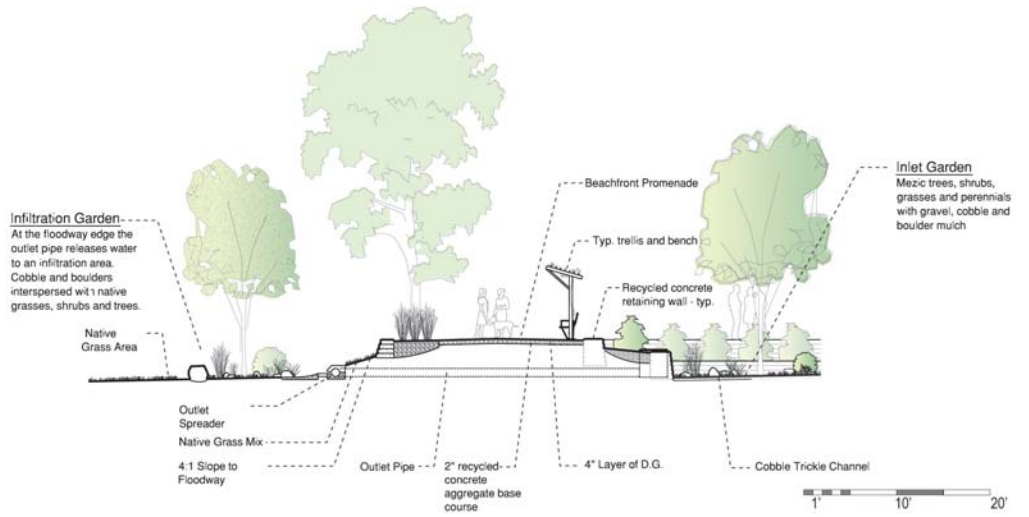
THE SQUARES ARE A COMBINATION OF NEIGHBORHOOD PARK AND STORM WATER DETENTION BASIN. THEY MUST FUNCTION TO RECEIVE DETAIN, AND OUTLET RUN-OFF FROM CITY STREETS, STREET TREE RAIN GARDENS, AND ADJACENT PROPERTIES.

THEY ALSO FUNCTION AS CIVIC OUTDOOR ROOMS: FEATURING PLAYGROUNDS, AND SPACES FOR A FARMER'S, EVENTS, AND PERFORMANCES. THE SQUARES TERMINATE AT A PROMENADE THAT OVERLOOKS THE REGIONAL GREENWAY.

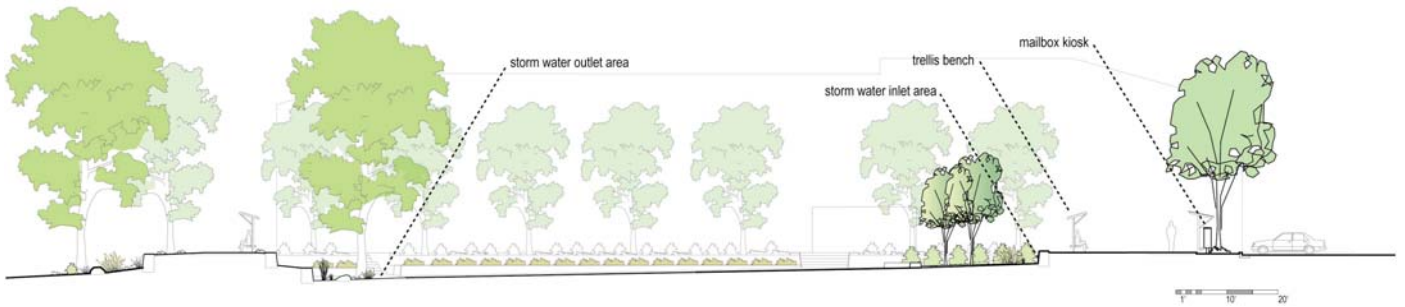


THE CENTRAL SQUARE IS FRAMED BY COMMERCIAL SPACE AND THE COHOUSING COMMON HOUSE. IT LINKS TO THE GREENWAY AND AREAS FOR COMMUNITY GARDENS AND AGRICULTURE





SECTION AT PROMENADE OVERLOOKING REGIONAL GREENWAY



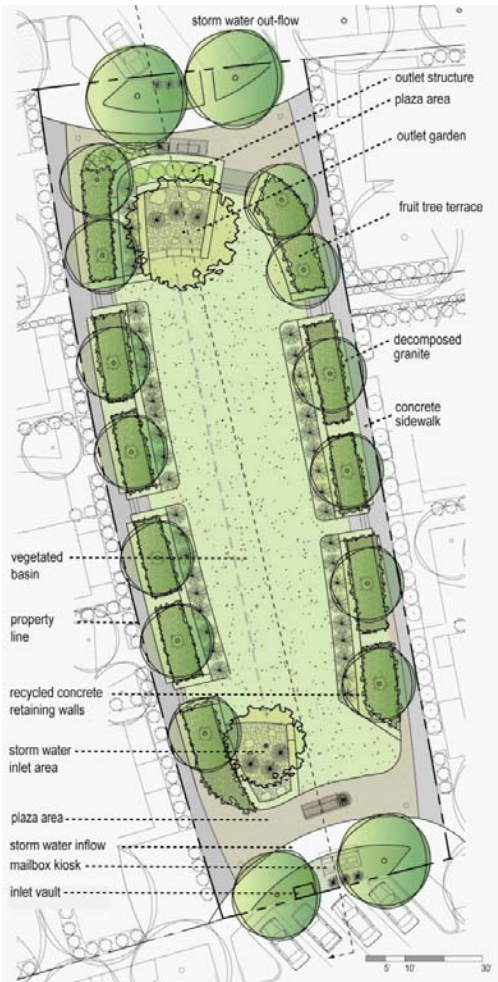
SECTION THROUGH CENTRAL SQUARE

CENTRAL SQUARE LOOKING SOUTH TOWARDS REGIONAL GREENWAY



GEOS

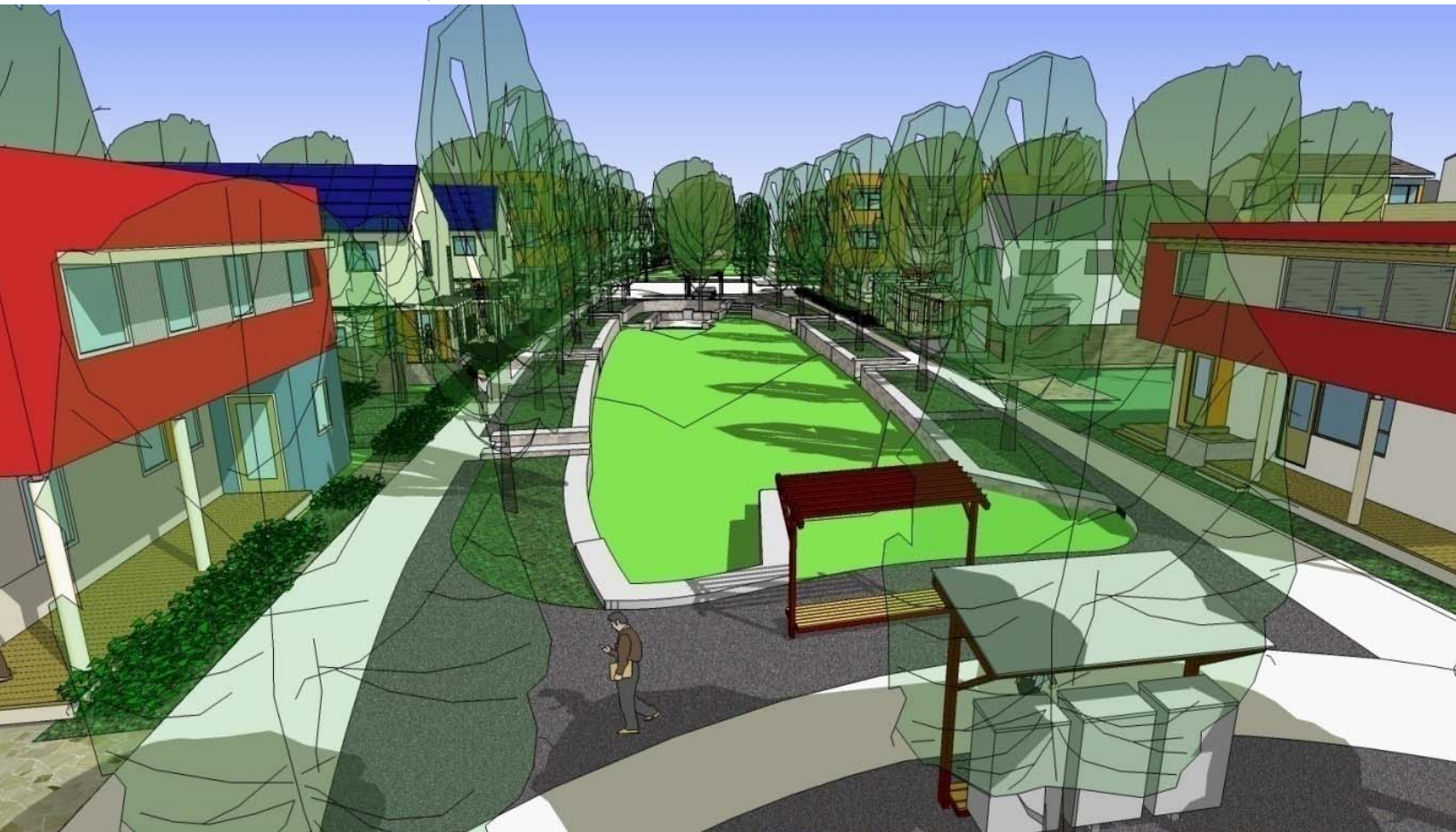
PERCOLATION PARKS: GREENS

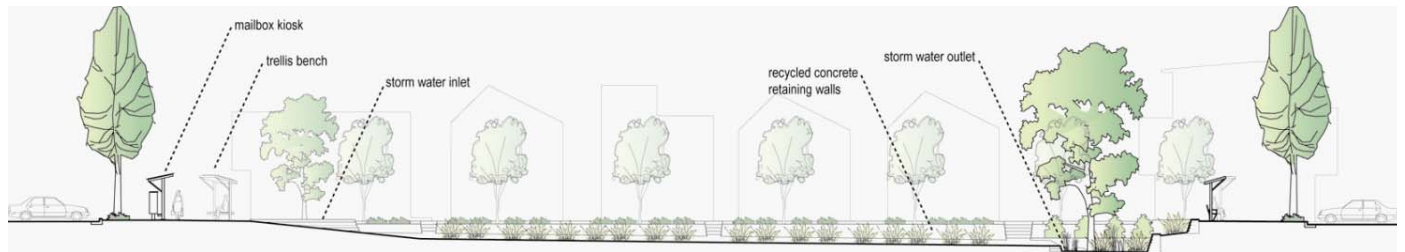
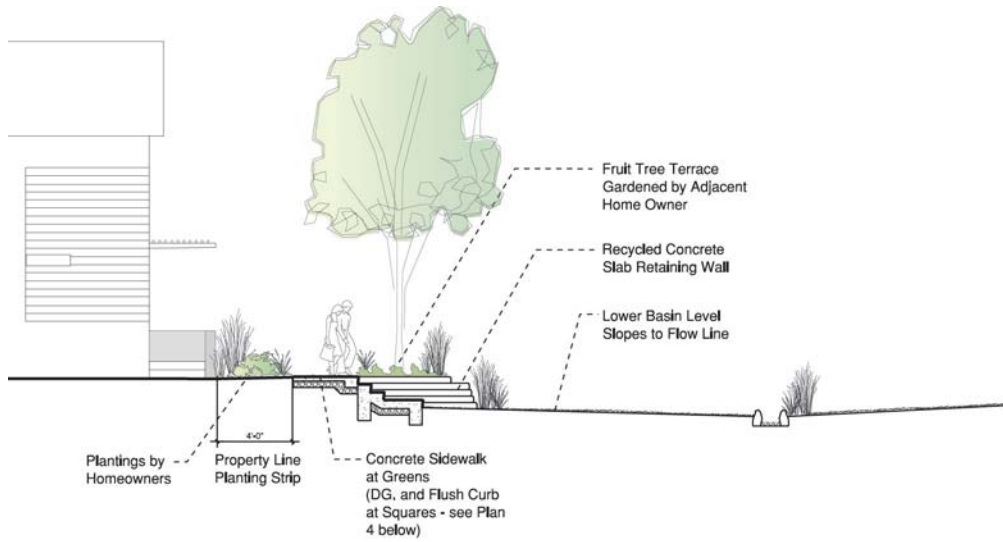


THE CHECKERBOARD GREENS COMBINE THE FUNCTIONS OF STORM WATER DETENTION BASINS AND NEIGHBORHOOD PARKS. EACH GREEN RECEIVES, DETAINS, AND OUTLETS RUN-OFF FROM CITY STREETS, STREET TREE RAIN GARDENS, AND ADJACENT PROPERTIES. IN ADDITION THEY PROVIDE A VARIETY OF OUTDOOR SPACES AND GARDENS FOR RESIDENTS OF THE COMMUNITY.

EACH GREEN INCLUDES A PEDESTRIAN ORIENTED UPPER LEVEL AND A VEGETATED LOWER BASIN LEVEL. RECYCLED CONCRETE RETAINING WALLS FORM TERRACED TRANSITIONS BETWEEN THESE LEVELS. CONCRETE STAIRS AND GRASS RAMPS PROVIDE ACCESS POINTS.

FRUIT TREE COOP ON TERRACES, AND MAIL BOX KIOSK SURROUND THE CENTRAL PERCOLATION PARK OR GREEN





THE GREENS ARE ENGINEERED TO BE HABITABLE, MULTI-FUNCTIONAL SPACES. THE FRUIT TREE TERRACES ARE TAKEN CARE OF BY ADJACENT PROPERTY OWNERS IN THE SAME WAY THAT TYPICAL TREE LAWN LANDSCAPING WOULD BE MAINTAINED BY ADJACENT OWNERS

